

# POWER COOL

EQUIPMENTS (M) SDN BHD (383045-D)



BUATAN MALAYSIA  
MADE IN MALAYSIA



## Best Service

Local Manufacturer  
of Commercial  
Refrigerator



Malaysia's  
Trustworthy Brand

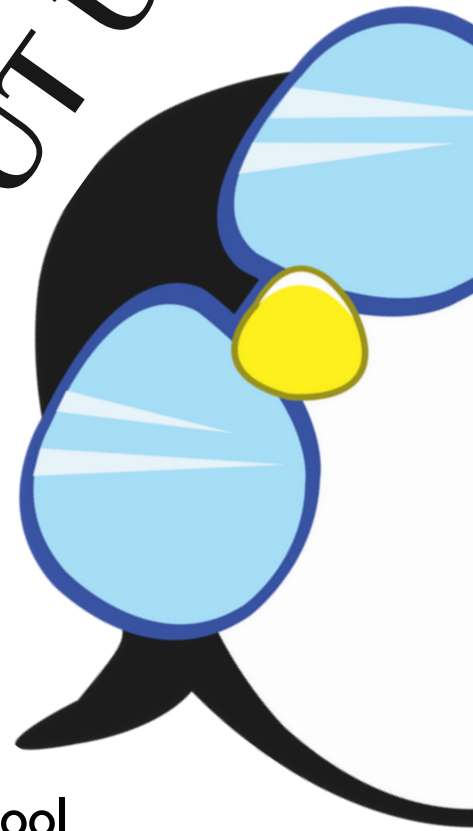
31<sup>ST</sup>  
ANNIVERSARY

Made in Malaysia  
SINCE 1991





# ABOUT US



## Power Cool Equipments (M) Sdn. Bhd.

is an established leading manufacturer & supplier of commercial-grade kitchen equipment that specializes in chillers, freezers and all kinds of refrigeration systems for commercial and industrial use, whereas Imax is our famous product brand in Malaysia. We also include the addition of after sales services such as installation and maintenance for all our clients. Furthermore, Hi-Ten Trading Sdn Bhd is providers as a direct retail arm of Power Cool Equipments (M) Sdn Bhd in Malaysia.

**Enquiry Hotline:** +6012 386 8210

**Service Hotline:** +6012 386 8743

**Delivery Hotline:** +6012 386 8250



- 02 About Us
- 04 Our Customer
- 05 Our Project & Our Product
- 06 Inverter Series
  - Display Series
  - Upright Series
  - Chiller Freezer Series
  - Counter Series
  - Chest / Island Freezer Series
  - Special Series
- 12 Certificate & Speech
- 13 Our Branch & Testimonial
- 14 Talent Hiring



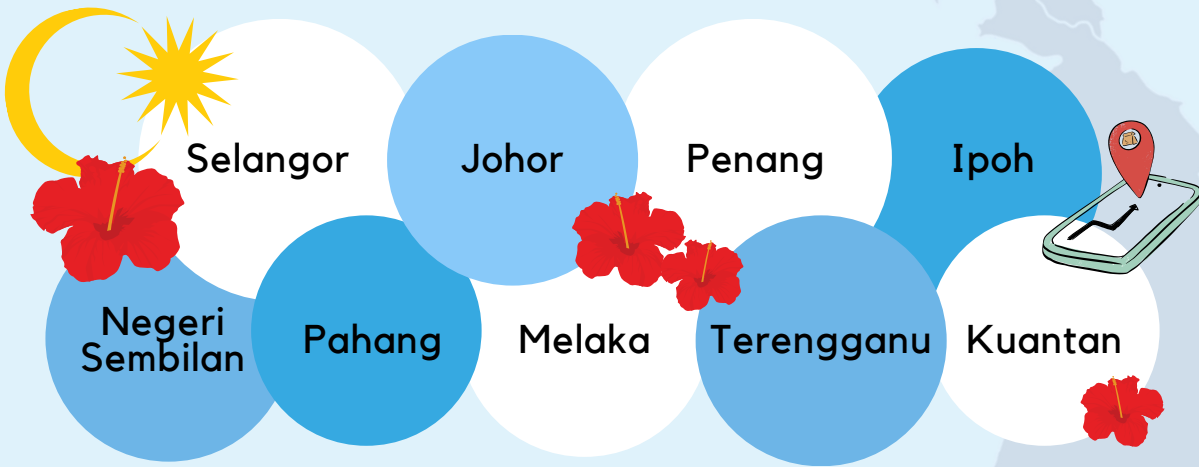
# CONTENTS



i-max

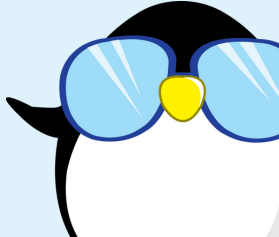


Partner up to produce meaning and value



CUSTOMER

MEET OUR



# i·max

## OUR PROJECT



## OUR PRODUCTS

1. Display Series
2. Chiller Freezer Series
3. Upright Series
4. Counter Series
5. Chest / Island Freezer Series
6. Special Series (Cold Room, Custom Made)





Inverter technology in commercial refrigerators offers several advantages compared to traditional refrigeration systems. Here are some benefits of inverter commercial refrigerators:

### ENERGY EFFICIENCY



Variable speed compressors save energy by adjusting to demand.

### TEMPERATURE CONTROL

Precise temperature management preserves product quality.



### QUIET OPERATION

Low noise levels due to smooth compressor operation.



### COST SAVINGS



Lower monthly energy bills outweigh initial investment.



### FASTER COOLING RESPONSE

Quick temperature recovery for busy commercial settings.



### ENVIRONMENTAL FRIENDLINESS



Lower energy consumption contributes to reduced emissions.

**These advantages** make inverter refrigerators a compelling choice for businesses seeking improved performance and sustainability in their refrigeration systems.

### EXTENDED COMPRESSOR LIFESPAN



Reduced wear and tear lead to longer compressor life.

1. Inverter refrigerators use a variable speed compressor that adjusts its speed based on the cooling demand. This results in significant energy savings compared to traditional compressors that operate at a fixed speed. The ability to modulate the compressor speed allows the refrigerator to operate at lower capacities during periods of lower demand, leading to reduced energy consumption.
2. Inverter technology enables precise control over the compressor speed, allowing for more accurate temperature regulation. This helps in maintaining a consistent and optimal temperature inside the refrigerator, preserving the quality of stored items.
3. Inverters produce less noise during operation because the compressor doesn't need to start and stop frequently. This can be particularly beneficial in commercial settings where a quieter environment is desired.
4. Although inverter refrigerators may have a higher upfront cost, the long-term energy savings often outweigh the initial investment. Businesses can benefit from lower monthly energy bills, contributing to overall cost savings.
5. Inverter compressors respond more quickly to changes in temperature, ensuring faster cooling and quicker recovery after the door has been opened. This is especially important in busy commercial environments where the refrigerator is accessed frequently.
6. By operating more efficiently and consuming less energy, inverter refrigerators contribute to lower greenhouse gas emissions. This aligns with environmental sustainability goals and may also lead to cost savings in regions where energy consumption is tied to carbon emissions.
7. The gradual start and stop of the compressor, as opposed to abrupt on/off cycles, result in reduced wear and tear. This extended lifespan can lead to lower maintenance costs for the refrigerator.

\*All photos shown for reference purposes only.

i-max

# DISPLAY SERIES



Suitable for drinks, fruits, vegetables, flowers and etc.

## Economy

\*\* Only Chiller \*\*

- 1 DOOR IMAX-C11
- 2 DOORS TINNY-2DC-VW
- 3 DOORS TINNY-3DC-VW



## Standard

\*\* Only Chiller \*\*

- 2 DOORS TINNY-2DC-T  
(W-White/ B-Black/ BB-All Black)
- 3 DOORS TINNY-3DC-T  
(W-White/ B-Black/ BB-All Black)



## Premium

\* Chiller \*      \* Freezer \*

- 1 DOOR HSB-1DC      HSB-1DF
- 2 DOORS HSB-2DC      HSB-2DF
- 3 DOORS HSB-3DC      HSB-3DF

Don't worry, just let me know your concern!



Best Selling



Best Choice



Chain Stores Preferred



# UPRIGHT & 2 IN 1 SERIES

Suitable for meats, drinks, sauce, vegetables and etc.

**Chiller (C)**

**Freezer (F)**

**Chiller Freezer (CF)**



2 Door

EQB-2DUPC  
EQB-2DUPF  
EQ-2DNCF

4 Door

EQB-4DUPC  
EQB-4DUPF  
EQ-4DNCF

6 Door

EQB-6DUPC  
EQB-6DUPF  
EQ-6DNCF



*\*All photos shown for reference purposes only.*

COPYRIGHT © 2023 POWER COOL EQUIPMENTS | ALL RIGHTS RESERVED



# COUNTER SERIES

Suitable for meats, drinks, sauce, vegetables and etc.

2 Door \*\* Freezer \*\*  
(1.2M) YD-1200CFM



2 Door \*\* Chiller / Freezer \*\*  
(1.2M) EQ-1200CCM/ CFM  
(1.5M) EQ-1500CCM/ CFM  
(1.8M) EQ-1800CCM/ CFM

3 Door \*\* Chiller / Freezer \*\*  
(2.1M) EQ-2100CCM/ CFM



\*All photos shown for reference purposes only.

COPYRIGHT © 2023 POWER COOL EQUIPMENTS | ALL RIGHTS RESERVED

# CHEST / ISLAND FREEZER SERIES

Suitable for meats, drinks, sauce, vegetables and etc.



## Chest Freezer

Solid Door (Manual Defrost)  
BD (W) 327, BD (W) 520, BD (W) 600

Glass Door (Manual Defrost)  
HT-SC/SD(W)-336B, HT-SC/SD(W)-516B  
SCSD-568S

*i·max*



## Island Freezer

Glass Door (Auto Defrost)  
YL-ISF-SD0.7A  
YL-ISF-SD0.7AG

YL-ISF-SD0.8A  
YL-ISF-SD0.8AG



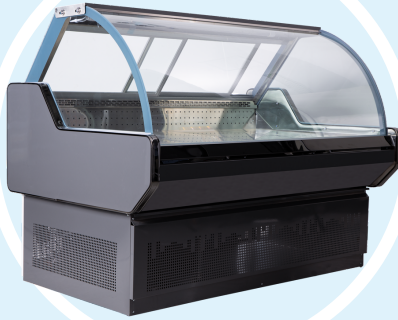
\*All photos shown for reference purposes only.

COPYRIGHT © 2023 POWER COOL EQUIPMENTS | ALL RIGHTS RESERVED

# SPECIAL SERIES



OPEN CHILLER



ARC MEAT FREEZER



FLAT MEAT CHILLER



COMBINED ISLAND FREEZER



(Back View)

4 DOOR UPRIGHT CHILLER WITH BACK DOOR



CAKE SHOWCASE



CHILLER FREEZER WITH CUSTOMIZED DRAWER



4 DOOR DISPLAY CHILLER



COLD ROOM & MORE



Speech by Power Cool's Managing Director, Lim Chun Siong:

I feel honored to have the opportunity to be interviewed by the renowned media, "ShangHai". Also want to share with our supporters that IMAX and HITEN brand have officially been awarded "Top Excellence Brand". With their beliefs, I believe that more people will be able to understand the history of the company. At the same time, I feel excited when promoting locally-made products throughout Malaysia because we love Malaysia.

I would like to express my sincere gratitude to all our employees, business partners and clients for your trust towards our brand. With our 30 years of experience, we have the opportunity to serve more customer by providing professional technical support and customer service. We always adhere to the management style of "people-oriented, user first, reputation first, and service society"; and constantly pursue the management concept of "management innovation, technology innovation, service innovation and brand innovation", which has opened up a broad market for the enterprise and promoted an extraordinary leap forward development of the enterprise.

It is our unremitting pursuit to create values for customers and enhance customer satisfaction; we hope to cooperate with all related parties to a win-win situation, to provide high quality products and services, to be sincere and good, to have continuous development, and to grow in opportunities and challenges.

Power Cool Equipments (M) Sdn Bhd will keep moving towards a higher, faster and stronger goal. We sincerely welcome friends at home and abroad to visit us!

Thanks again and stay safe & healthy!



# OUR BRANCH



## KOTA KINABALU (SABAH OUTLET)

CL. 015261104 (No 38) Teck Guan Villa,  
Penampang 88300, Kota Kinabalu, Sabah.  
Office: +6012 386 3488  
H/P: +6012 836 7688



## SUNGAI BAKAP (PENANG OUTLET)

G1 No. 4334, Jln Lima Kongsu, Kampung Lima Kongsu, 14200 Sungai Bakap, Pulau Pinang.  
Office: +604 585 0081  
H/P: +6012 386 8477 (8164)

# OUR TESTIMONIAL



**ALL LASTING BUSINESS IS BUILT ON FRIENDSHIP - ALFRED.A MONTAPER**



2019



2020



2021



# TALENT HIRING

WE WORK; WE EARN; WE HAPPY

Tele-  
marketing

Senior  
Admin

Technician

Sales  
King



HR Department

+603 6094 1122 | +6012 386 8351